

# SHERCO

RACE PREPARATION 4 STROKE RANGE



## ATTENTION!

Before modifying the vehicle to the race version, please insist on obtaining a signed workshop order from your customer in which you inform the customer's own risk and that it nullifies the vehicle's approval for use on public roads.

Please don't throw the removed parts and give them to the customer

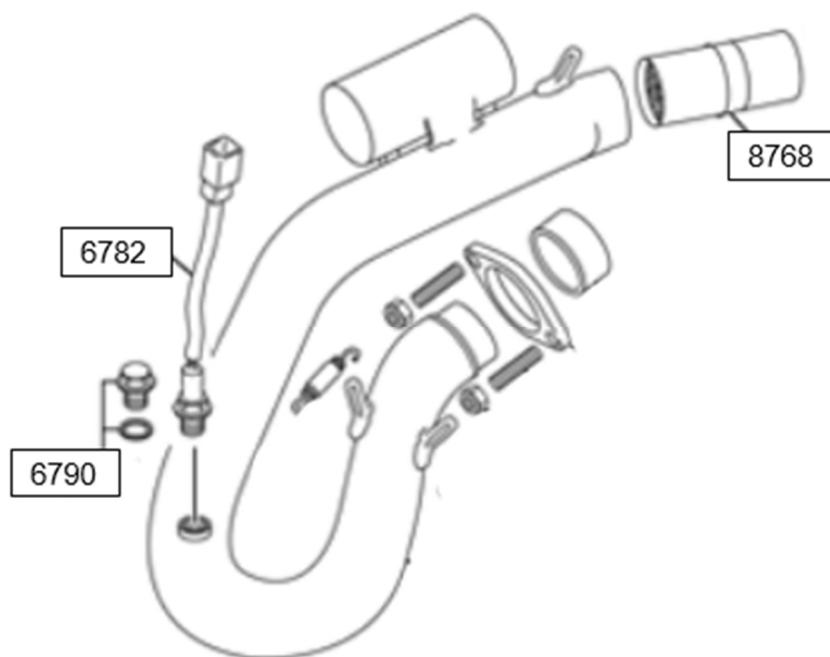
Remark :

Please make sure that no third person has access to this manual

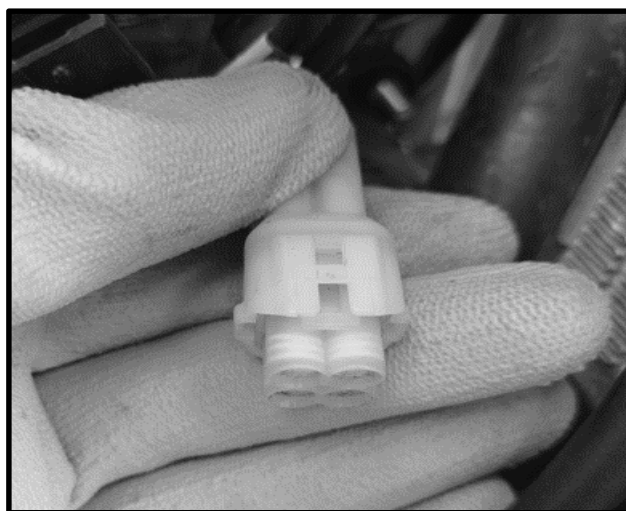


# EXHAUST

Remove catalyst (8768) and Lambda sensor (6782) Install plug screw (6790)

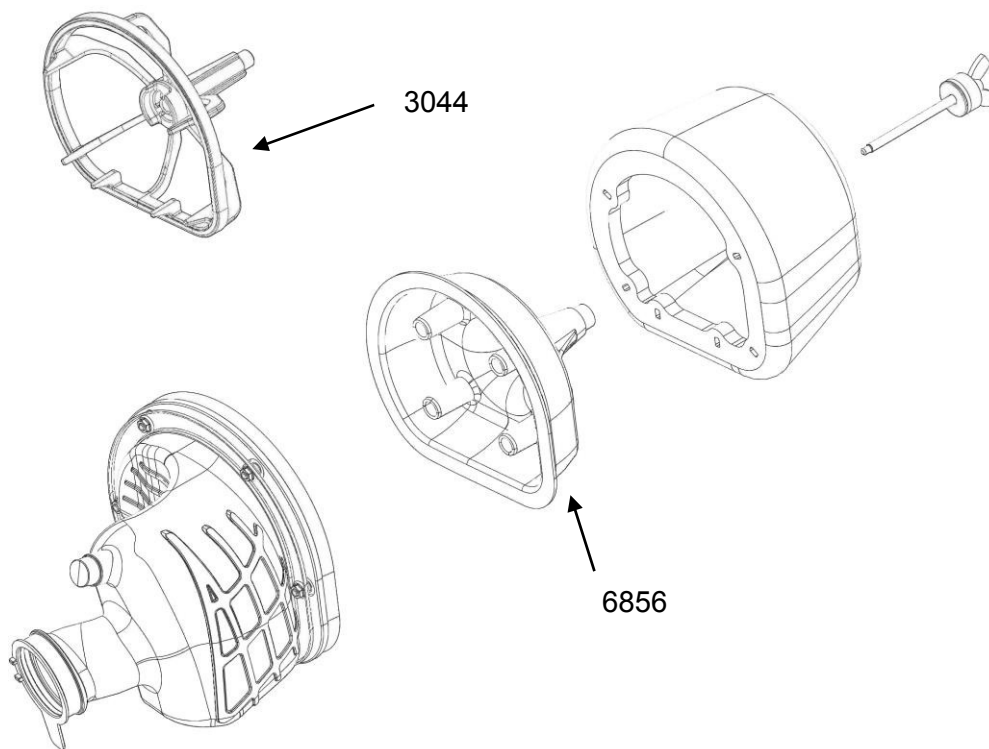


Fit the lambda sensor cap connector provided with the motorcycle



# INTAKE

Remove intake restriction (6856) and place filter basket (3044)



Update ECU with the appropriate racing mapping, all mappings are available on the sherconetwork:  
INFORMATION → TECHNICAL INFORMATION → INJECTION MAP

The screenshot shows the Sherco Network website interface. At the top, there is a navigation bar with the Sherco Network logo, a user profile icon, a price indicator 'PRO. PRICE EXCL. TAXES', and a language selector set to 'ENGLISH'. Below the navigation bar is a banner image of a motorcycle. The main content area is titled 'Technical information' and includes a filter for 'ENDURO' and 'Year ALL'. A 'ZIP' download button is visible on the right. Below this is a table listing injection maps with columns for Date, Description, File, and View.

Date	Description	File	View
26/02/2019		302T8C04 300 8E-R 2019 (with coil 3303).mot	DOWNLOAD
26/02/2019		262T8C04 250 8E-R 2019 (with coil 3303).mot	DOWNLOAD
16/01/2019		302T8C05 300 8E-R.mot	DOWNLOAD
16/01/2019		262T8C05 250 8E-R.mot	DOWNLOAD
12/10/2018		464EU 801 460 8EF 2017 STANDARD.mot	DOWNLOAD
12/10/2018		464EUR02 460 8EF 2018 AKRAPOVIC.mot	DOWNLOAD
12/10/2018		304EUR01 300 8EF 2018 AKRAPOVIC.mot	DOWNLOAD



# ELECTRICAL

First of all remove:

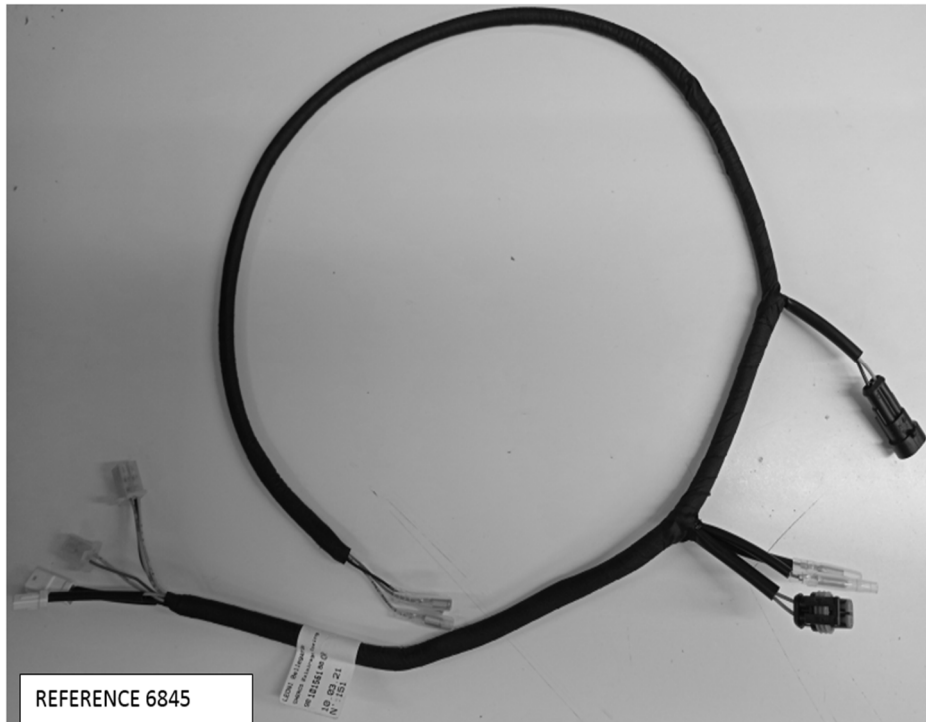
- Seat
- Fuel tank
- Side panels
- Front headlight



Remove the original light switch (0413) and install the racing switch (3507) in the same position on the left handle.



Remove original main standard lighting sub harness P/No.8145 and replace with the racing lighting sub harness.6845.





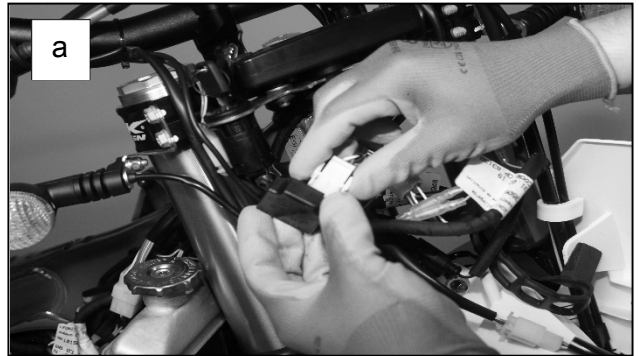
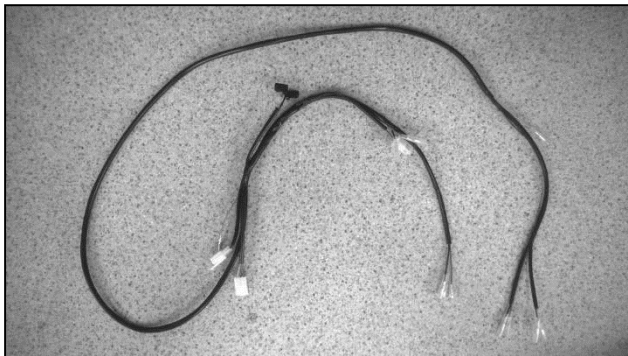
Start to disconnect:

- a) power plug
- b) rear brake light / tail light wiring connection
- c) speedo connection
- d) left handle bar lighting switch



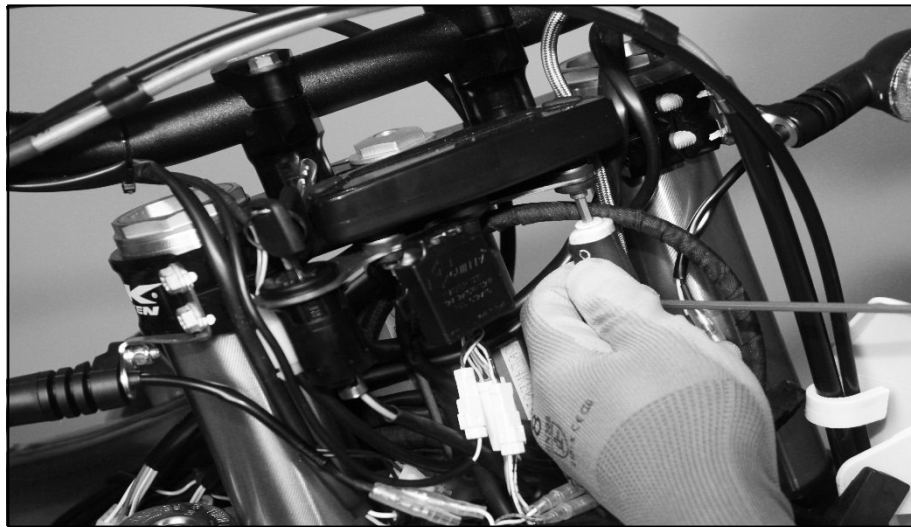
Remove original accessory wiring sub harness (3509) and start disconnect:

- a) Turn indicator flasher unit wiring connector
- b) LHF and RHF Turn indicator wiring connectors
- c) Turn indicator bullet style wiring connectors
- d) Head light wiring connector
- e) On the rear of the bike, connect the plate light





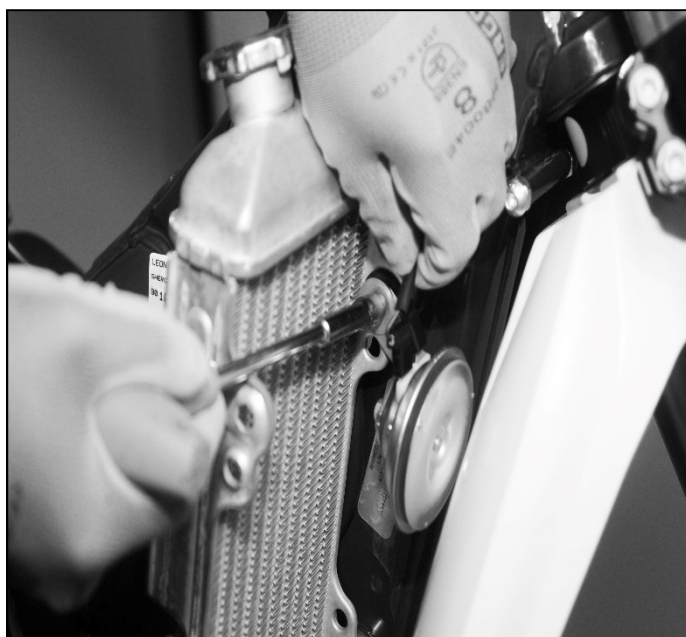
Remove original speedo holder (4389) and replace with racing speedo bracket 4526



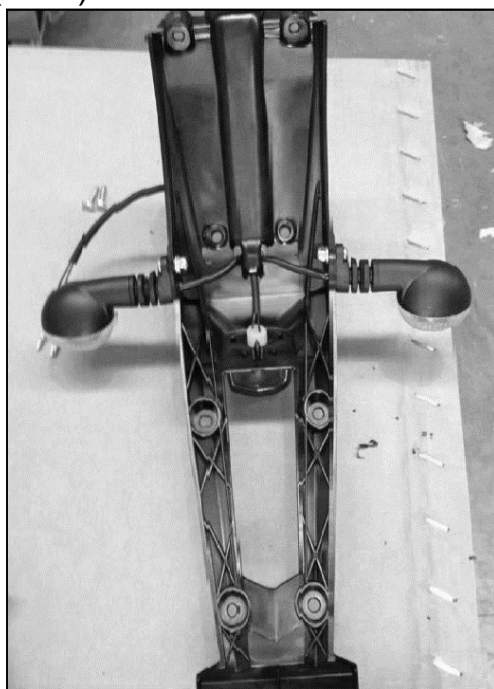
Remove the 4 indicator.



Remove horn and horn bracket



Remove the rear fender extension(3549)



Remove left and right mirrors to the handle bar



# **SHERCO**

***AN EMOTION IS BORN***

