



Rim Band Replacement Manual

This Manual is provided as a guide to show:

- **Removing and reinstalling the rim band on the rear wheel of a Sherco Motorcycle that is equipped with a tubeless tire. (1999 – 2003, applicable 1.25 – 2.9 models)**

The problem on this bike was that it would develop a flat tire because of a slow air leak originating from the wheel spokes. The solution was to replace the rubber rim band.

The text and pictures in this manual were provided by a Team Sherco Rider who recorded the process as he performed these operations on a 2002 2.9 series.

For additional information see the following manuals that can be downloaded from the www.shercousa.com and the www.sherco-moto.com sites.

- **Sherco Set up and Lubrication Guide**
- **Tubeless Tire Changing Manual**

If you have any questions about the procedure please call Ryan Young Products at 1-800-607-8742.

By Bill Ibsen 4/03



1. Remove the rear wheel from the bike, and the rear tire from the rim.



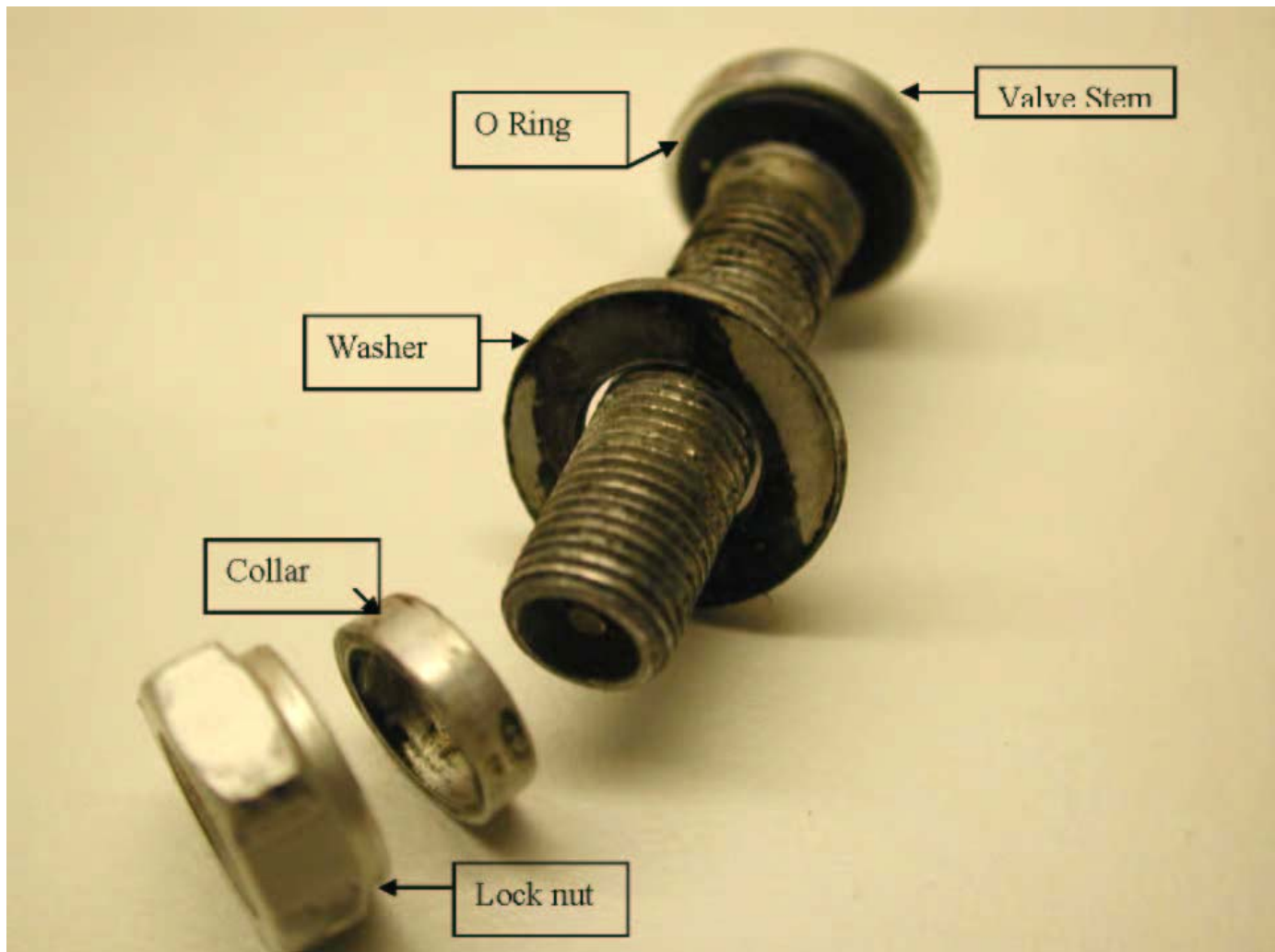
2. Using a tire iron, pry up the rim band, and slide it off the rim.



3. Remove the valve stem lock nut. Note the protruding rim band, a possible source of air leakage.



4. Using a screwdriver, unscrew the valve stem and lock nut, and remove from rim. Clean all the rim surfaces thoroughly of dirt and rubber to ensure a good, airtight seal between the rim and the rim band, as well as between the tire and the rim



Note the valve stem parts, and their sequence of installation.



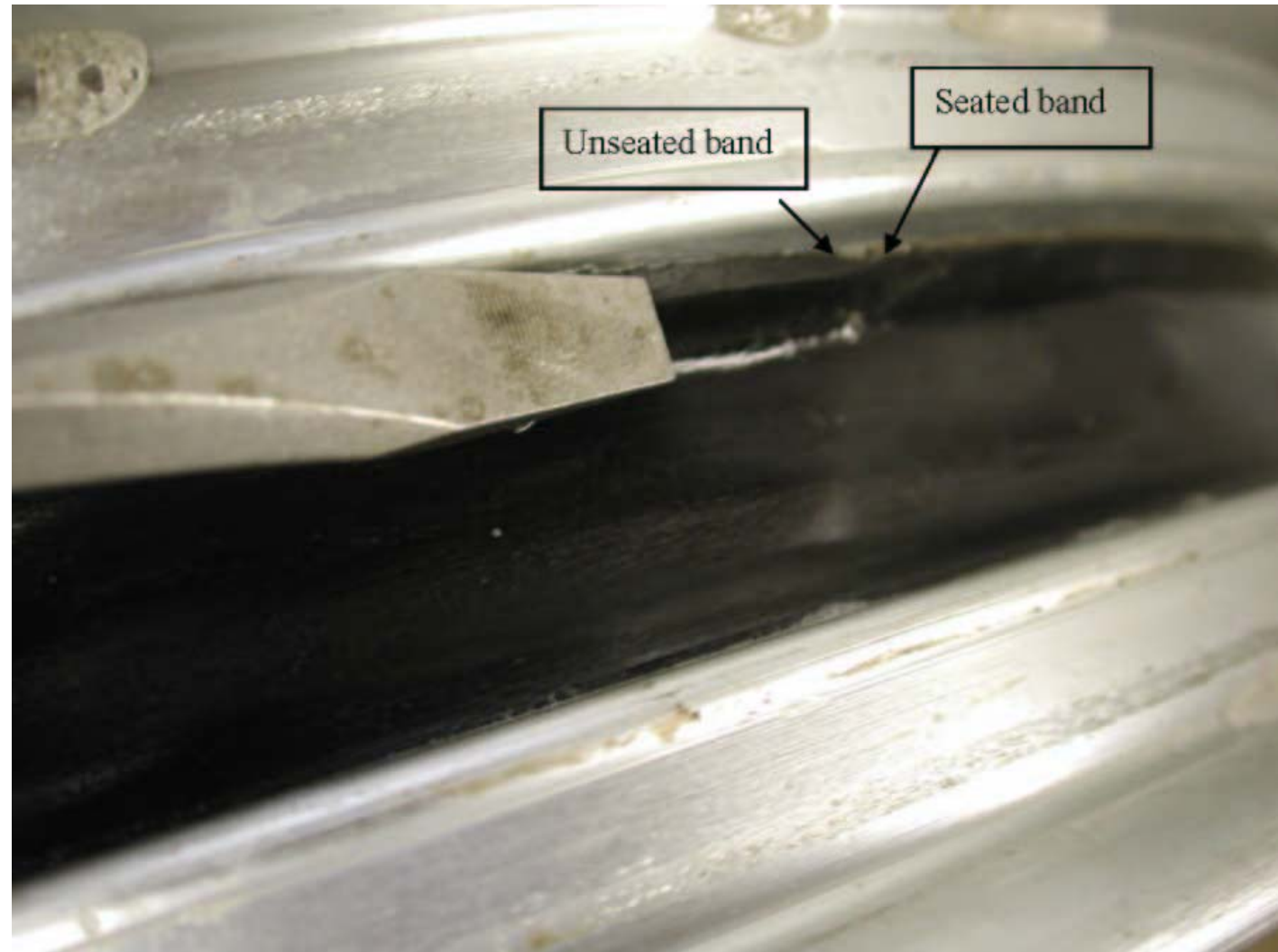
5. Valve stem core (actual valve) and valve stem (for informational purposes).



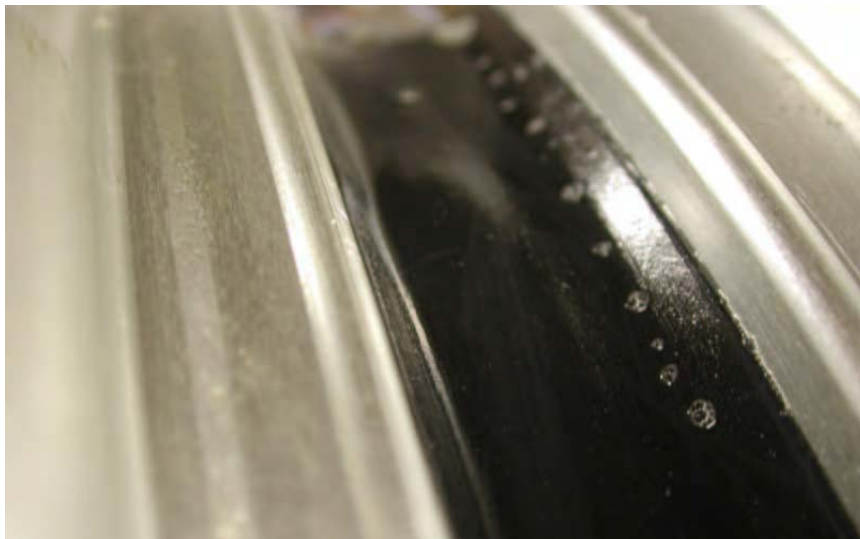
6. Pull new rim rubber around valve stem collar (which rests above the washer) and insert this assembly into the rim, maintain tension on the assembly to ensure that the rubber remains wrapped around the collar until the lock nut is fully tightened. Two people make this job of holding and pulling and maintaining tension easier!



7. This is how the properly installed new rim band should appear when the lock nut is fully tightened.



8. Lubricate the rim band with soapy water on all surfaces, and then work the rim band into both sides of the machined grooves inside the rim. The band must be fully seated inside these grooves in order to create an airtight seal between the tire and the spokes. Be careful not to puncture the rim band!



9. Above photos show the rim band fully seated on both edges of the rim, inside the machined grooves. Reassemble the tire onto the rim, and then reassemble the completed wheel on the bike.